



## Thank you for your interest in Normandie Ridge!

**Normandie Ridge is a non-profit, continuing care retirement community (CCRC)** sometimes known as a life-care community. This is a type of retirement community in the U.S. where a continuum of aging care needs—from independent living to personal care, to skilled nursing care—can all be met within the community. These various levels of shelter and care may be housed on different floors or wings of a single high-rise building or in physically adjacent buildings, such as apartments, garden cottages, or spread out in a campus setting. The emphasis of the CCRC model is to enable residents to avoid having to move, except to another level of care within the community, if their needs change. **As a non-profit, Normandie Ridge, never asks its residents to move out should they outlive their financial resources. For the residents of Normandie Ridge there is peace of mind in knowing that they will always have a place to live and be cared for, regardless of their continued ability to pay.**

*Let Your Life Shine...Brighter Together!* ✨

# NORMANDIE RIDGE

an Albright Care Services Retirement Living Community

Melanie Falk, Senior Living Advisor | 717-718-0937 | [Melanie.Falk@AlbrightCare.org](mailto:Melanie.Falk@AlbrightCare.org)

# Living Options at Normandie Ridge

## Independent Living



At Normandie Ridge, the continuum of care ideally begins with folks moving to our Independent Living settings. The Independent Living cottages and apartments at Normandie Ridge are for freedom-seeking people over the age of 62 who are looking to simplify and shed the responsibilities of home ownership (e.g. mowing, snow removal, maintenance and repairs, and of course, taxes.) These are folks who are healthy, need no supervision or 24 hour care, but are planning for a day when they may need such things. They like the idea of our continuum of care, where they have a plan for the future with an assurance that, should they need care, it will be provided to them at Normandie Ridge. They enjoy on-campus amenities such as restaurants, an indoor pool, a beauty salon, transportation services, activities, entertainment, and a bank. A one-time entrance fee is paid when moving to Normandie Ridge Independent Living, as well as a monthly maintenance fee. For more information or to schedule a tour: call 717-718-0937.

## Nursing Care



The Normandie Ridge Nursing Care Center provides its residents with 24-hour care. Our staff consists of Registered Nurses, Licensed Practical Nurses, and Certified Nursing Assistants. Support staff includes activities, food services, housekeeping, laundry, social services, chaplain services, and maintenance. All residents of Normandie Ridge have priority admission to the Nursing Care Center, should the need arise. One can also use this facility for a short or long-term stay depending on the need. For more information or to schedule a tour: call 717-718-0953.

## Personal Care

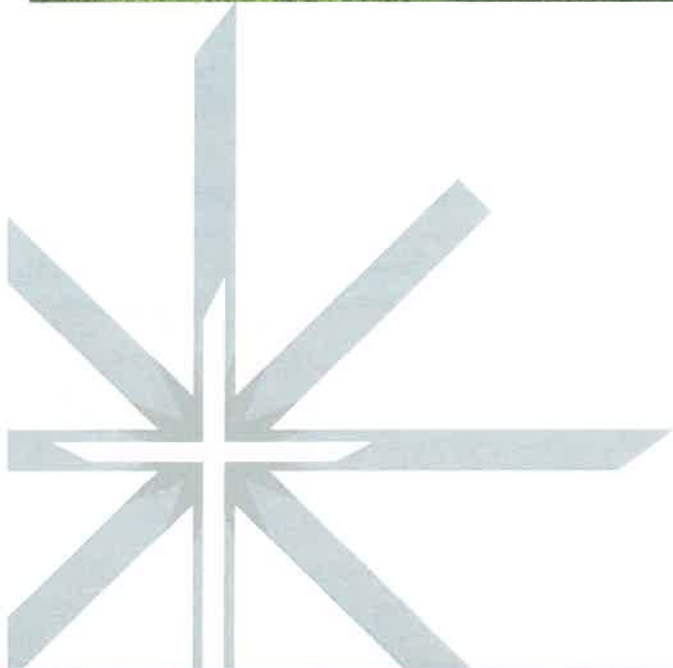
The Normandie Ridge Personal Care Center is for those residents who need some assistance with their care. Three meals per day are provided along with 24-hour supervision. Many residents have chosen to live here because they want to maintain their independence without the additional responsibility of an apartment or home. One may also reside in this center for an interim or long-term stay depending on the need. All residents of Normandie Ridge have priority admission to the Personal Care center. A resident may transfer between the levels of care at Normandie Ridge as needed. The Personal Care Administrator can assist you with these transitions. For more information or to schedule a tour: Call 717-718-2908.



## Memory Care

The Memory Care Residence at Normandie Ridge is an 18-bed designated dementia care personal care home. This unit features programming dedicated to the life enrichment of individuals with short-term memory challenges. The staff is trained to provide programming and assistance to maximize the quality of life for those individuals. For more information or to schedule a tour: call 717-718-2908.

# Apartment Floor Plans

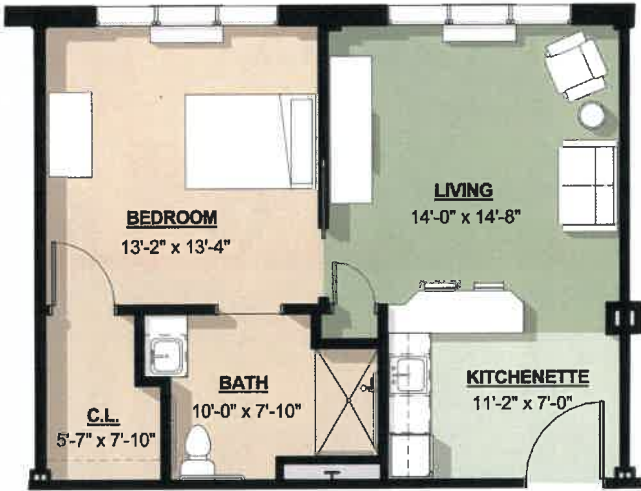


*Let Your Life Shine...Brighter Together!* ✨  
**NORMANDIE  
RIDGE**

an Albright Care Services Retirement Living Community

*The kind of place*

YOU'LL LOVE TO CALL HOME



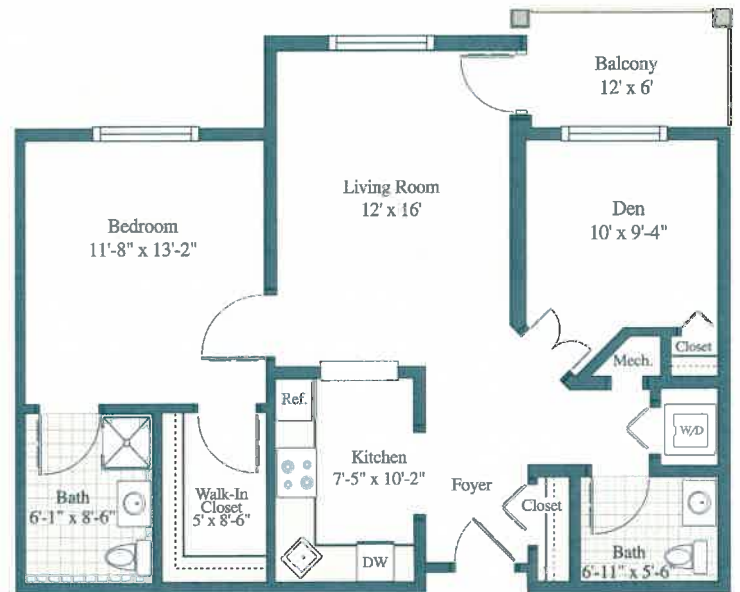
One-Bedroom  
Alcove Apartment  
615 sq. ft.



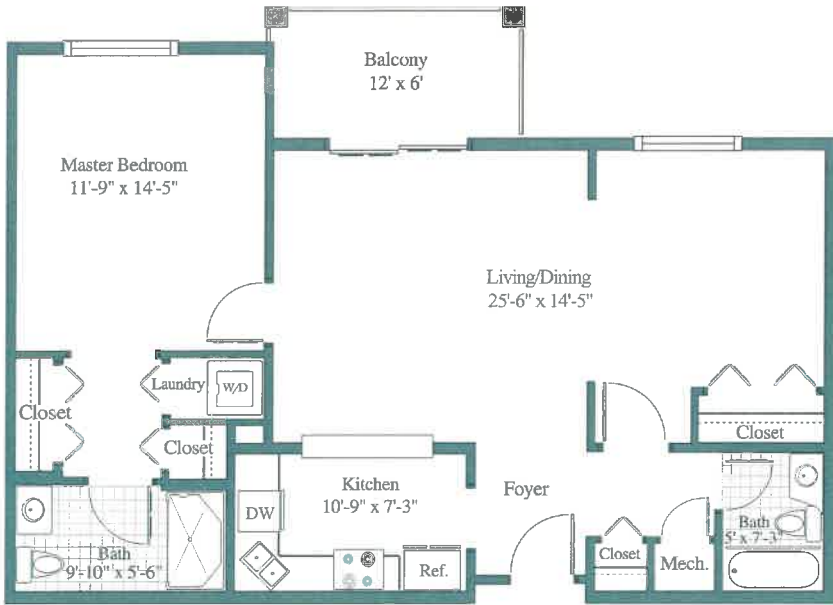
Two-Bedroom  
Alcove Apartment  
755 sq. ft.



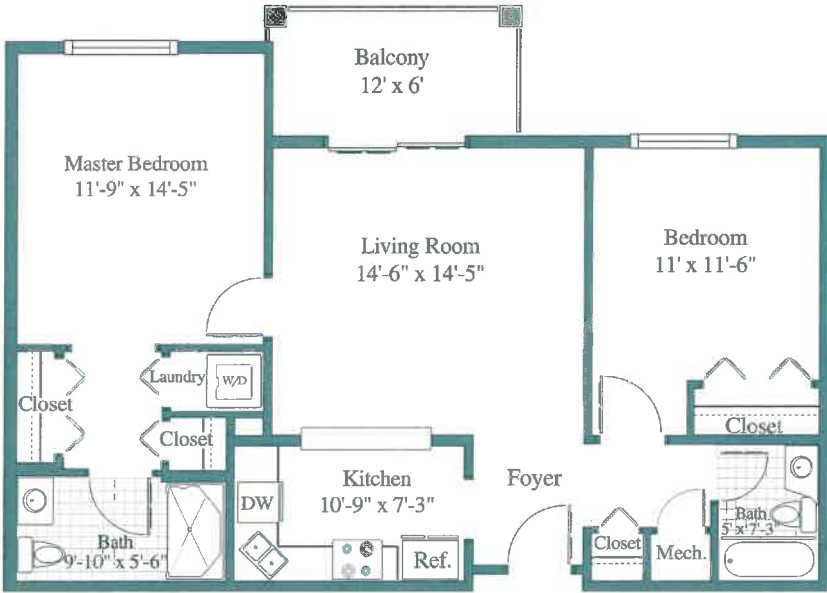
One-Bedroom Traditional  
710 sq. ft.



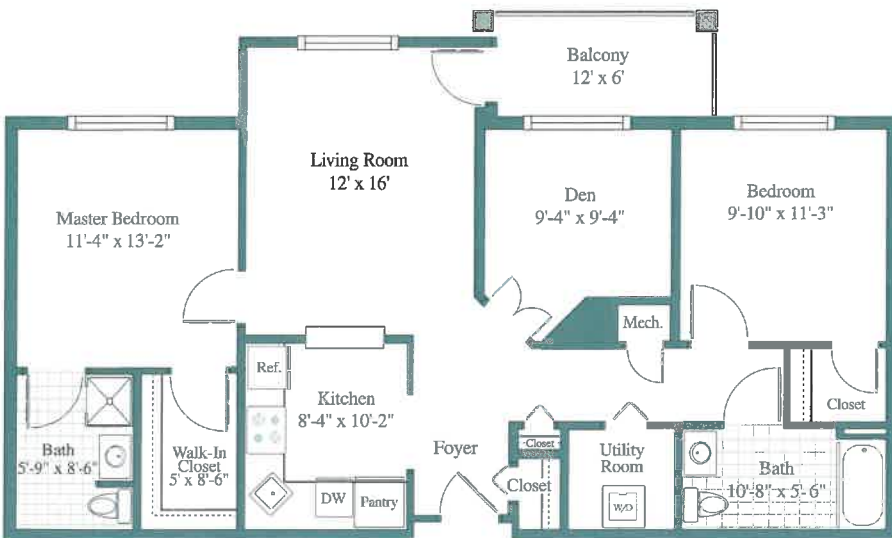
One-Bedroom with Den  
856 sq. ft.



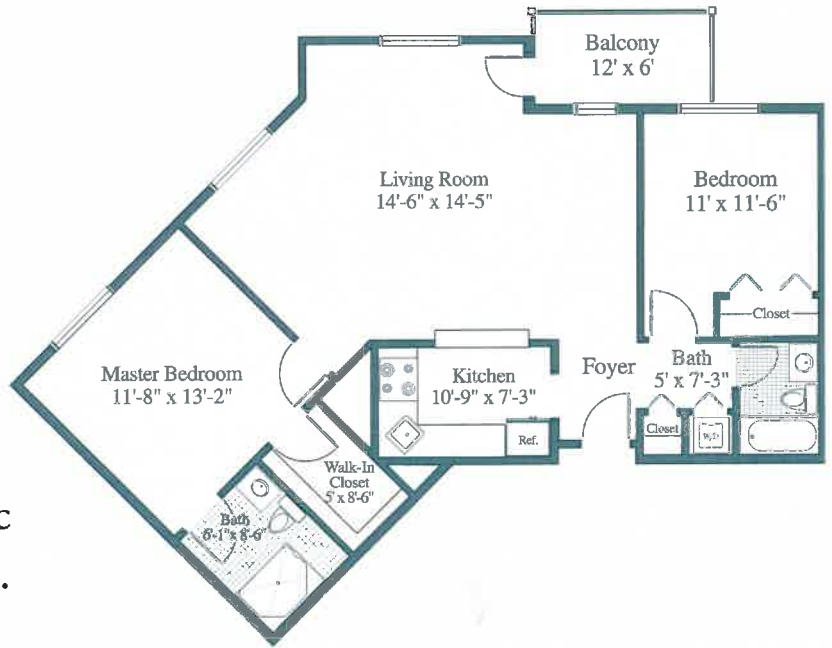
One-Bedroom Deluxe  
960 sq. ft.



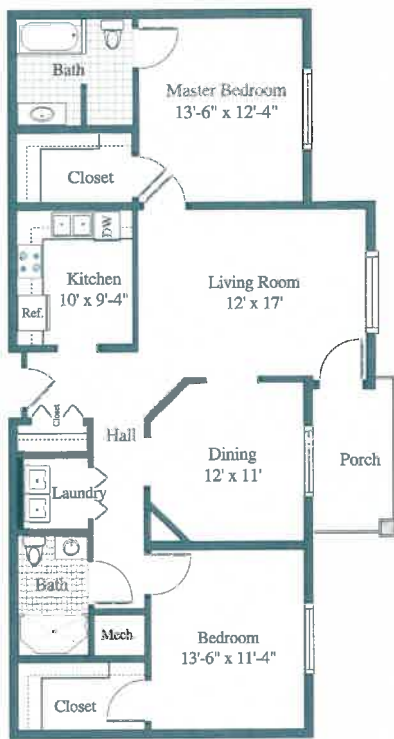
Two-Bedroom Traditional  
960 sq. ft.



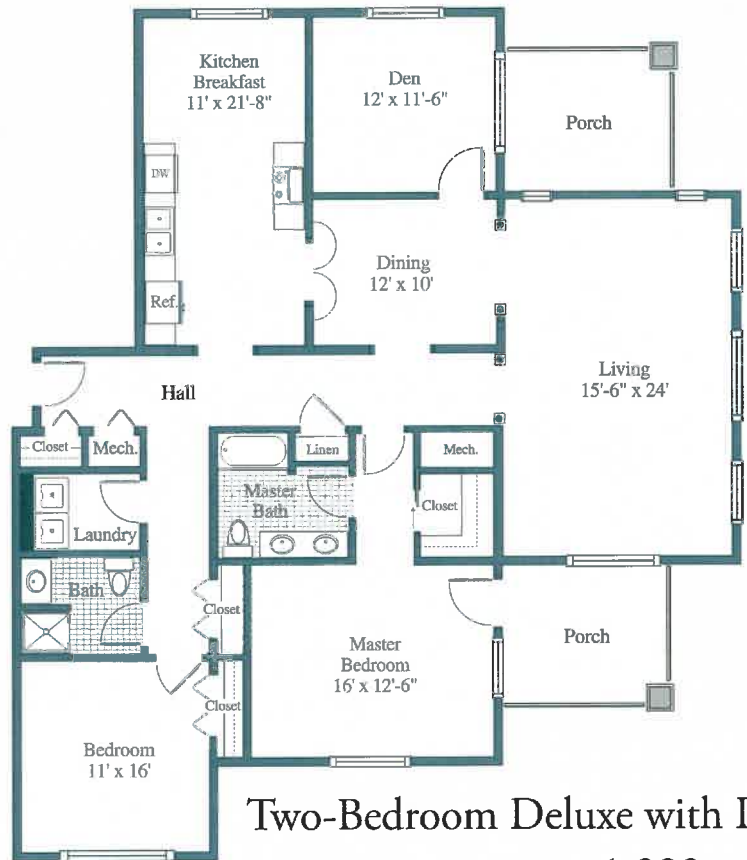
Two-Bedroom with Den  
1,108 sq. ft.



Two-Bedroom Classic  
1,180 sq. ft.



Two-Bedroom Deluxe  
1,300 sq. ft.

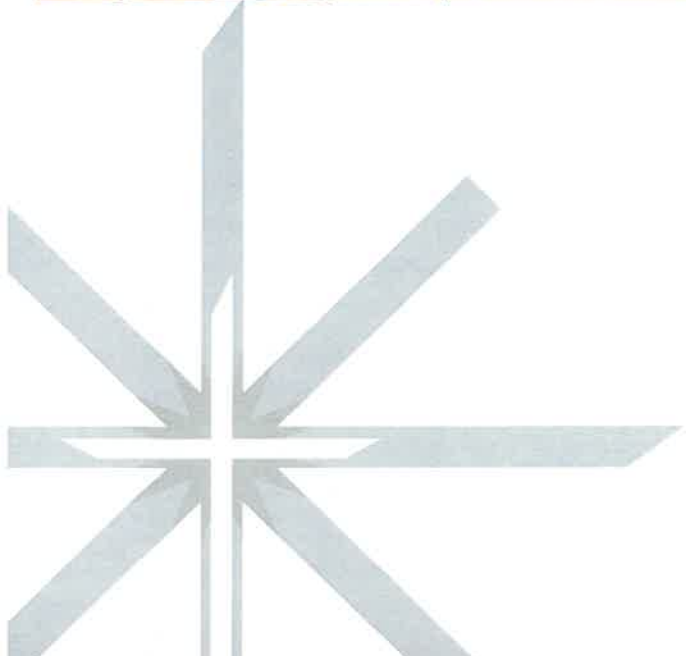


Two-Bedroom Deluxe with Den  
1,993 sq. ft.

*The kind of place*

YOU'LL LOVE TO CALL HOME

# Garden Cottage Floor Plans



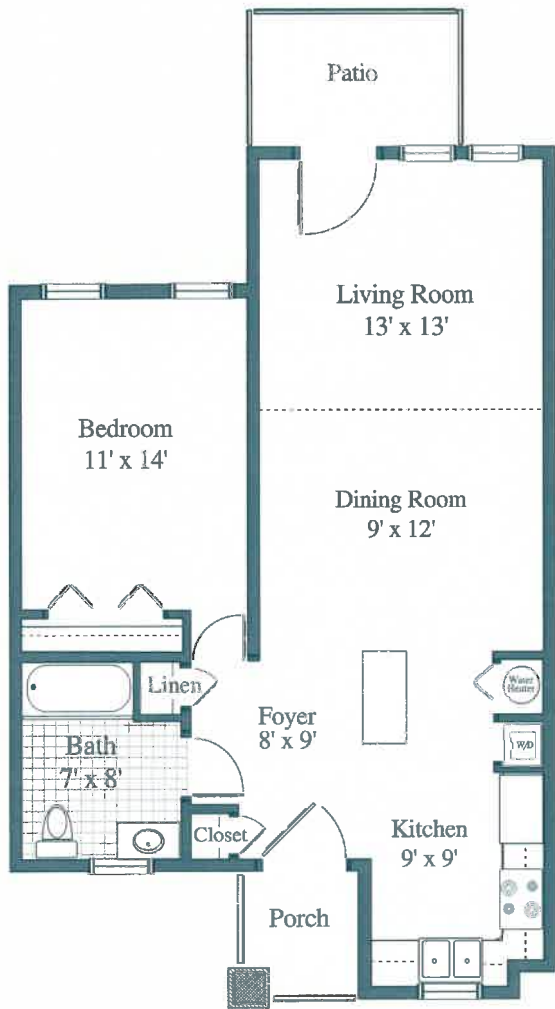
*Let Your Life Shine...Brighter Together!* ✨

## NORMANDIE RIDGE

an Albright Care Services Retirement Living Community

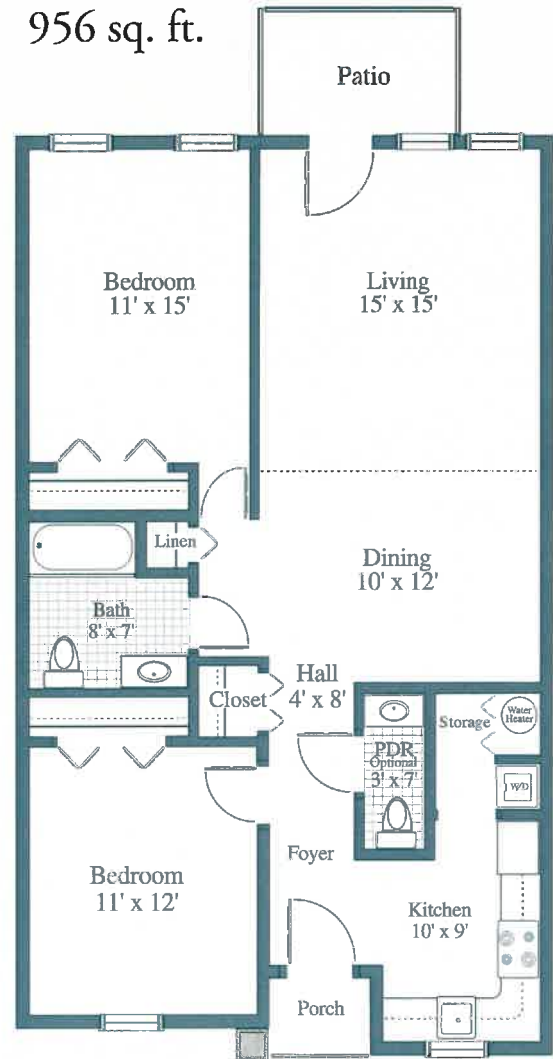
*The kind of place*

YOU'LL LOVE TO CALL HOME



The Mercer  
725 sq. ft.

The Morgan  
956 sq. ft.

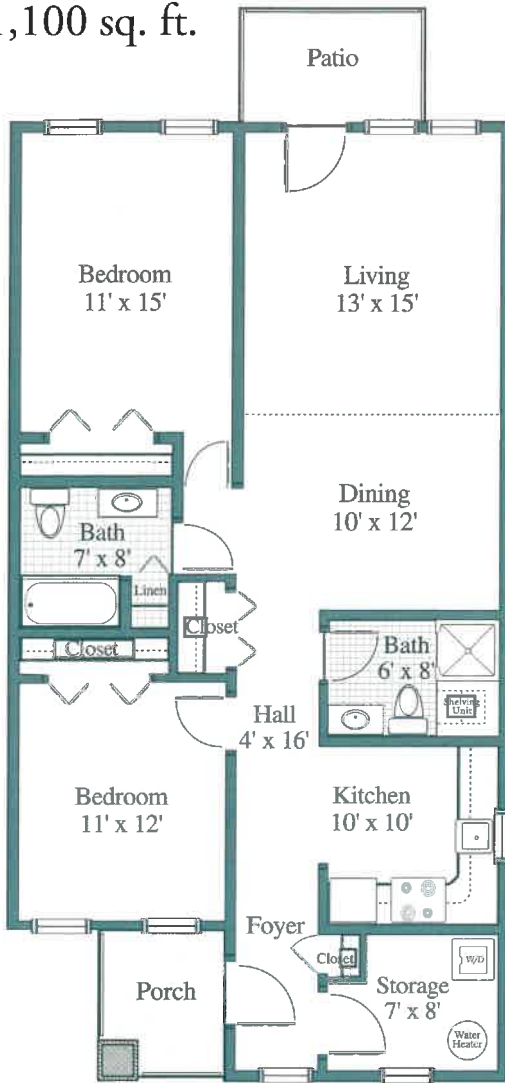


*Let Your Life Shine...Brighter Together!* ✨  
**NORMANDIE  
RIDGE**

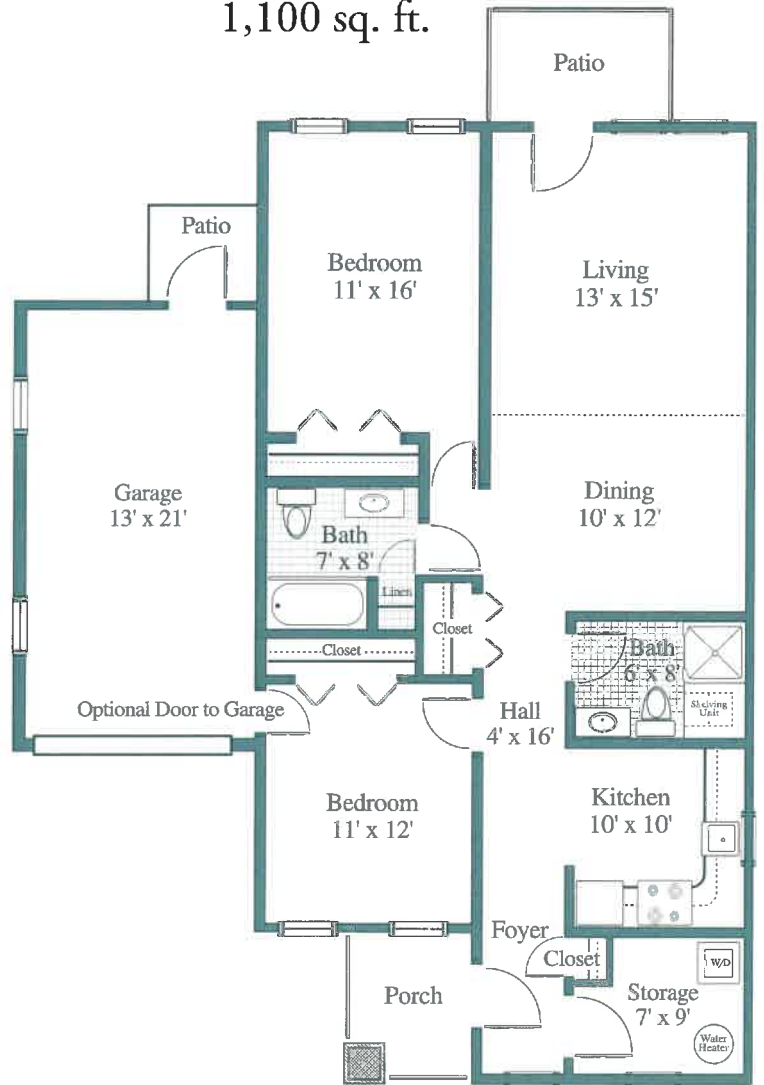
an Albright Care Services Retirement Living Community



The Monroe  
1,100 sq. ft.

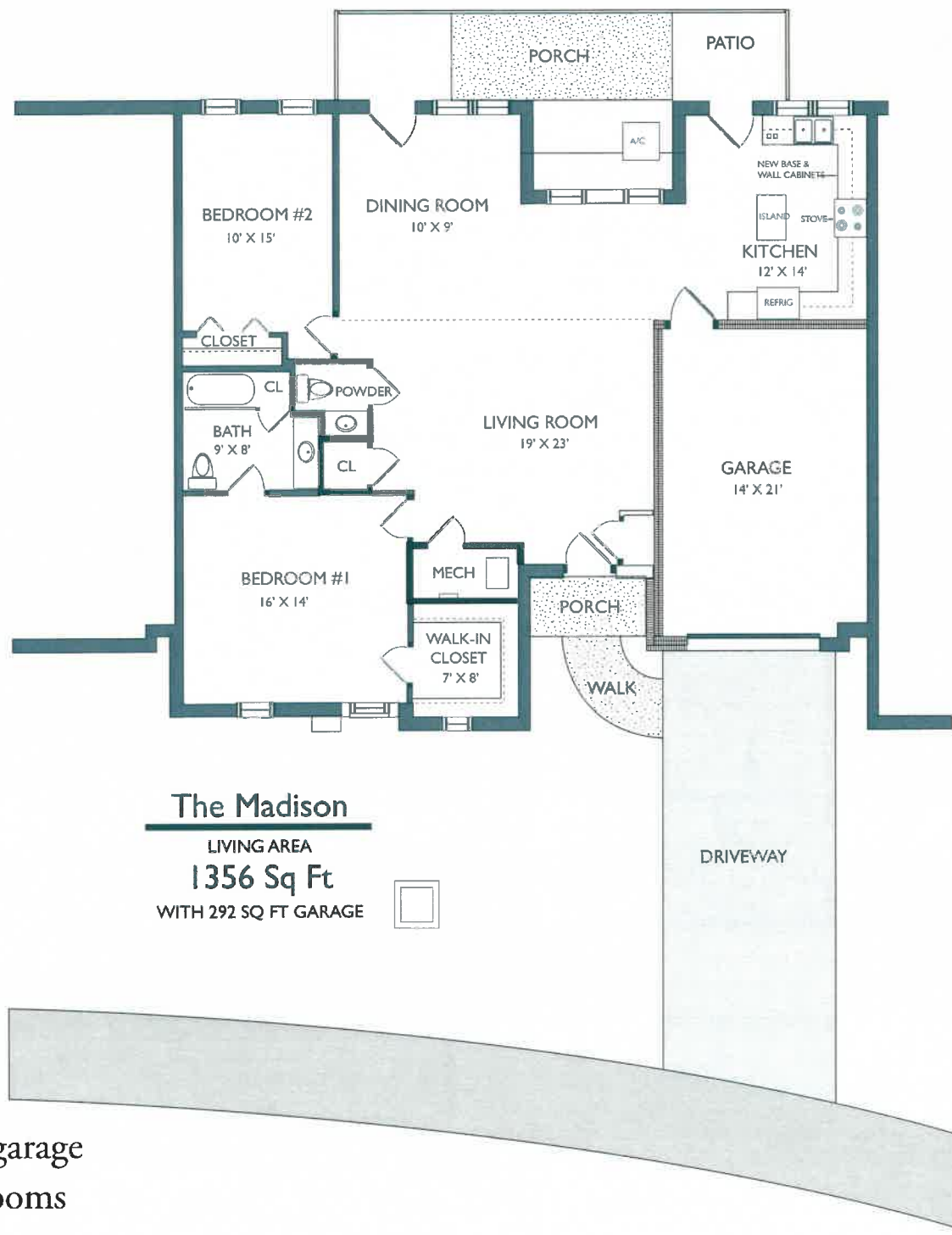


The Monroe with Garage  
1,100 sq. ft.



*The kind of place*

YOU'LL LOVE TO CALL HOME



- Attached garage
- Two bedrooms
- 1.5 bathrooms
- Open concept plan with space for relaxing and living
- Combination of existing one-bedroom and two-bedroom cottage

*The kind of place*

YOU'LL LOVE TO CALL HOME

# 2021 Pricing for Residential Living Apartments

When you calculate the home maintenance and major repairs, real estate taxes, and the daily living expenses that are included at Normandie Ridge, you may be surprised at how our monthly service fee compares to the cost of living in your present house.

Add in our wide range of programs and opportunities to laugh, learn, and grow, our beautiful campus, and priority access to on-site health care services, and you'll see why you can anticipate more!



## **One Bedroom Traditional**

Entrance fee: \$119,900

One person per month: \$1,334

Two people per month: \$1,690

## **One Bedroom with Den**

Entrance fee: \$144,500

One person per month: \$1,391

Two people per month: \$1,747

## **One Bedroom Deluxe**

### **/Two Bedroom Traditional**

Entrance fee: \$162,100

One person per month: \$1,487

Two people per month: \$1,843

## **Two Bedroom with Den**

Entrance fee: \$187,100

One person per month: \$1,640

Two people per month: \$1,996

Refund amortization is five years.

Other refund options available.

Contact the Marketing Director for details.

## **Two Bedroom Classic**

Entrance fee: \$199,200

One person per month: \$1,725

Two people per month: \$2,081

## **Two Bedroom Deluxe**

Entrance fee: \$219,500

One person per month: \$1,867

Two people per month: \$2,223

## **Two Bedroom Deluxe with Den**

Entrance fee: \$336,500

One person per month: \$2,669

Two people per month: \$3,025

## **Alcove Apartments: One Bedroom**

Entrance fee: \$110,800

One person per month: \$1,082

Two people per month: \$1,438

## **Alcove Apartments: Two Bedroom**

Entrance fee: \$136,000

One person per month: \$1,246

Two people per month: \$1,602

rev 11/20





## Services Included in the Monthly Fee:

- Indoor and outdoor maintenance and groundskeeping service
- Transportation to regularly scheduled off-campus events
- On and off-campus programs and social activities
- Property taxes, sewer, water and refuse collection
- Electric and cable (Digital Starter Cable Package)
- Fitness center and fitness classes
- Use of the wood working shop
- 24-hour emergency support
- Monthly Meal Credit
- Access to computers
- Heated, indoor pool
- Fine arts studio
- Walking paths
- Library

Apartment residents are responsible for phone and internet.  
Ask your Senior Living Advisor for more information.

*Let Your Life Shine...Brighter Together!* ✨  
**NORMANDIE  
RIDGE**

an Albright Care Services Retirement Living Community



*Let Your Life Shine...Brighter Together!*

717-764-6262  
NormandieRidge.org

# 2021 Pricing for Residential Living Apartments

When you calculate the home maintenance and major repairs, real estate taxes, and the daily living expenses that are included at Normandie Ridge, you may be surprised at how our monthly service fee compares to the cost of living in your present house.

Add in our wide range of programs and opportunities to laugh, learn, and grow, our beautiful campus, and priority access to on-site health care services, and you'll see why you can anticipate more!



## 50% Refund Plan (guarantees a minimum refund of 50% of entrance fee)

### **One Bedroom Traditional**

Entrance fee: \$173,300

One person per month: \$1,334

Two people per month: \$1,690

### **One Bedroom with Den**

Entrance fee: \$209,300

One person per month: \$1,391

Two people per month: \$1,747

### **One Bedroom Deluxe**

#### **/Two Bedroom Traditional**

Entrance fee: \$235,200

One person per month: \$1,487

Two people per month: \$1,843

### **Two Bedroom with Den**

Entrance fee: \$271,200

One person per month: \$1,640

Two people per month: \$1,996

Refund amortization is five years.

Other refund options available.

Contact the Marketing Director for details.

rev 11/20

### **Two Bedroom Classic**

Entrance fee: \$289,300

One person per month: \$1,725

Two people per month: \$2,081

### **Two Bedroom Deluxe**

Entrance fee: \$309,200

One person per month: \$1,867

Two people per month: \$2,223

### **Two Bedroom Deluxe with Den**

Entrance fee: \$487,345

One person per month: \$2,669

Two people per month: \$3,025

### **Alcove Apartments: One Bedroom**

Entrance fee: \$160,900

One person per month: \$1,082

Two people per month: \$1,438

### **Alcove Apartments: Two Bedroom**

Entrance fee: \$197,000

One person per month: \$1,246

Two people per month: \$1,602





## Services Included in the Monthly Fee:

- Indoor and outdoor maintenance and groundskeeping service
- Transportation to regularly scheduled off-campus events
- On and off-campus programs and social activities
- Property taxes, sewer, water and refuse collection
- Electric and cable (Digital Starter Cable Package)
- Fitness center and fitness classes
- Use of the wood working shop
- 24-hour emergency support
- Monthly Meal Credit
- Access to computers
- Heated, indoor pool
- Fine arts studio
- Walking paths
- Library

Apartment residents are responsible for phone and internet.  
Ask your Senior Living Advisor for more information.

*Let Your Life Shine...Brighter Together!* ✨  
**NORMANDIE  
RIDGE**

an Albright Care Services Retirement Living Community



*Let Your Life Shine...Brighter Together!*

717-764-6262  
NormandieRidge.org

# 2021 Pricing for Garden Cottages

When you calculate the home maintenance and major repairs, real estate taxes, and the daily living expenses that are included at Normandie Ridge, you may be surprised at how our monthly service fee compares to the cost of living in your present house.

Add in our wide range of programs and opportunities to laugh, learn, and grow, our beautiful campus, and priority access to on-site health care services, and you'll see why you can anticipate more!



## **The Mercer**

Entrance fee: \$102,000

One person per month: \$842

Two people per month: \$1,052

## **The Morgan**

Entrance fee: \$134,500

One person per month: \$1,114

Two people per month: \$1,324

## **The Monroe**

Entrance fee: \$154,800

One person per month: \$1,283

Two people per month: \$1,493

## **The Monroe with Garage**

Entrance fee: \$182,900

One person per month: \$1,283

Two people per month: \$1,493

## **The Madison**

Entrance fee: \$225,100

One person per month: \$2,098

Two people per month: \$2,308

## **The Madison with Garage**

Entrance fee: \$253,200

One person per month: \$1,584

Two people per month: \$1,794

---

**Sunroom (where available): \$16,900**

---

Refund amortization in five years.



## Services Included in the Monthly Fee:

- Indoor and outdoor maintenance and groundskeeping service
- Transportation to regularly scheduled off-campus events
- On and off-campus programs and social activities
- Property taxes, sewer, water and refuse collection
- Fitness center and fitness classes
- Use of the wood working shop
- 24-hour emergency support
- Access to computers
- Heated, indoor pool
- On-site banking
- Fine arts studio
- Walking paths
- Library

Cottage residents are responsible for electric, phone, internet, cable and gas utilities.

*Let Your Life Shine...Brighter Together!* ✨  
**NORMANDIE  
RIDGE**

an Albright Care Services Retirement Living Community

rev 11/20

*Let Your Life Shine...Brighter Together!*



717-764-6262  
NormandieRidge.org



# 2021 Pricing for Garden Cottages

When you calculate the home maintenance and major repairs, real estate taxes, and the daily living expenses that are included at Normandie Ridge, you may be surprised at how our monthly service fee compares to the cost of living in your present house.

Add in our wide range of programs and opportunities to laugh, learn, and grow, our beautiful campus, and priority access to on-site health care services, and you'll see why you can anticipate more!



## 50% Refund Plan (guarantees a minimum refund of 50% of entrance fee)

### **The Mercer**

Entrance fee: \$147,400

One person per month: \$842

Two people per month: \$1,052

### **The Morgan**

Entrance fee: \$194,700

One person per month: \$1,114

Two people per month: \$1,324

### **The Monroe**

Entrance fee: \$224,000

One person per month: \$1,283

Two people per month: \$1,493

---

**Sunroom (where available): \$24,800**

---

Refund amortization in five years.

### **The Monroe with Garage**

Entrance fee: \$265,600

One person per month: \$1,283

Two people per month: \$1,493

### **The Madison**

Entrance fee: \$326,400

One person per month: \$2,098

Two people per month: \$2,308

### **The Madison with Garage**

Entrance fee: \$367,200

One person per month: \$1,584

Two people per month: \$1,794



## Services Included in the Monthly Fee:

- Indoor and outdoor maintenance and groundskeeping service
- Transportation to regularly scheduled off-campus events
- On and off-campus programs and social activities
- Property taxes, sewer, water and refuse collection
- Fitness center and fitness classes
- Use of the wood working shop
- 24-hour emergency support
- Access to computers
- Heated, indoor pool
- On-site banking
- Fine arts studio
- Walking paths
- Library

Cottage residents are responsible for electric, phone, internet, cable and gas utilities.

*Let Your Life Shine...Brighter Together!* ✨  
**NORMANDIE  
RIDGE**

an Albright Care Services Retirement Living Community

rev 11/20

*Let Your Life Shine...Brighter Together!*



717-764-6262  
NormandieRidge.org

# 2021 Pricing for Memory Care



## Memory Care Residence

**Semi-Private Accommodations:** \$260/day

**Private Accommodations:** \$289/day

- 14 private rooms and 2 semi-private rooms
- Staff members who dine with residents to remind them of home
- Specialized Therapeutic Engagement Program designed to stimulate and challenge mental acuity
- Natural layout that facilitates easy navigation
- Items such as full cupboards and hutches that help stimulate residents' memories
- A natural pathway inside the building that allows for successful wandering
- An enclosed secure patio and garden
- Physical attachment to campus that allows residents and staff to feel included
- Detractors that discourage the desire to exit, such as doors that look like walls
- Large, secure windows that allow natural light and create a connection to the Normandie Ridge community

rev 11-20





# 2021 Pricing for Personal Care and Skilled Nursing Care



**Personal Care** at Normandie Ridge is a lifestyle option for residents who may need assistance with their physical care but can otherwise live independently. We offer a one-story residence with comfortable apartments.

## Level I

**Private:** \$214/day

**Semi-Private:** \$122/person/day

Services may include: medication monitoring, supply ordering as needed, standby assistance with bathing and showering, monitoring of activities of daily living, assistance with setting up appointments.

Three meals per day and housekeeping.

## Level II

**Private:** \$240/day

**Semi-Private:** \$148/person/day

Services may include: medication administration and oversight, treatments as needed, assistance with bathing, showering, and toileting, minimal assistance with activities of daily living as needed, appointment scheduling assistance and twice daily checks.

Three meals per day and housekeeping.

## Level III

**Private:** \$269/day

**Semi-Private:** \$177/person/day

Services may include: medication administration and daily treatments as ordered, incontinence care, total assistance with activities of daily living and mobility as needed, two-hour checks. Three meals per day and housekeeping.

At the **Normandie Ridge Nursing Care Center**, our staff of registered nurses, licensed practical nurses, geriatric certified nursing assistants and certified nursing assistants ensure our residents receive excellent care 24 hours a day.

## Nursing Care Center

**Semi-Private Accommodations:** \$377/day

**Private Accommodations:** \$394/day

rev 11/20



