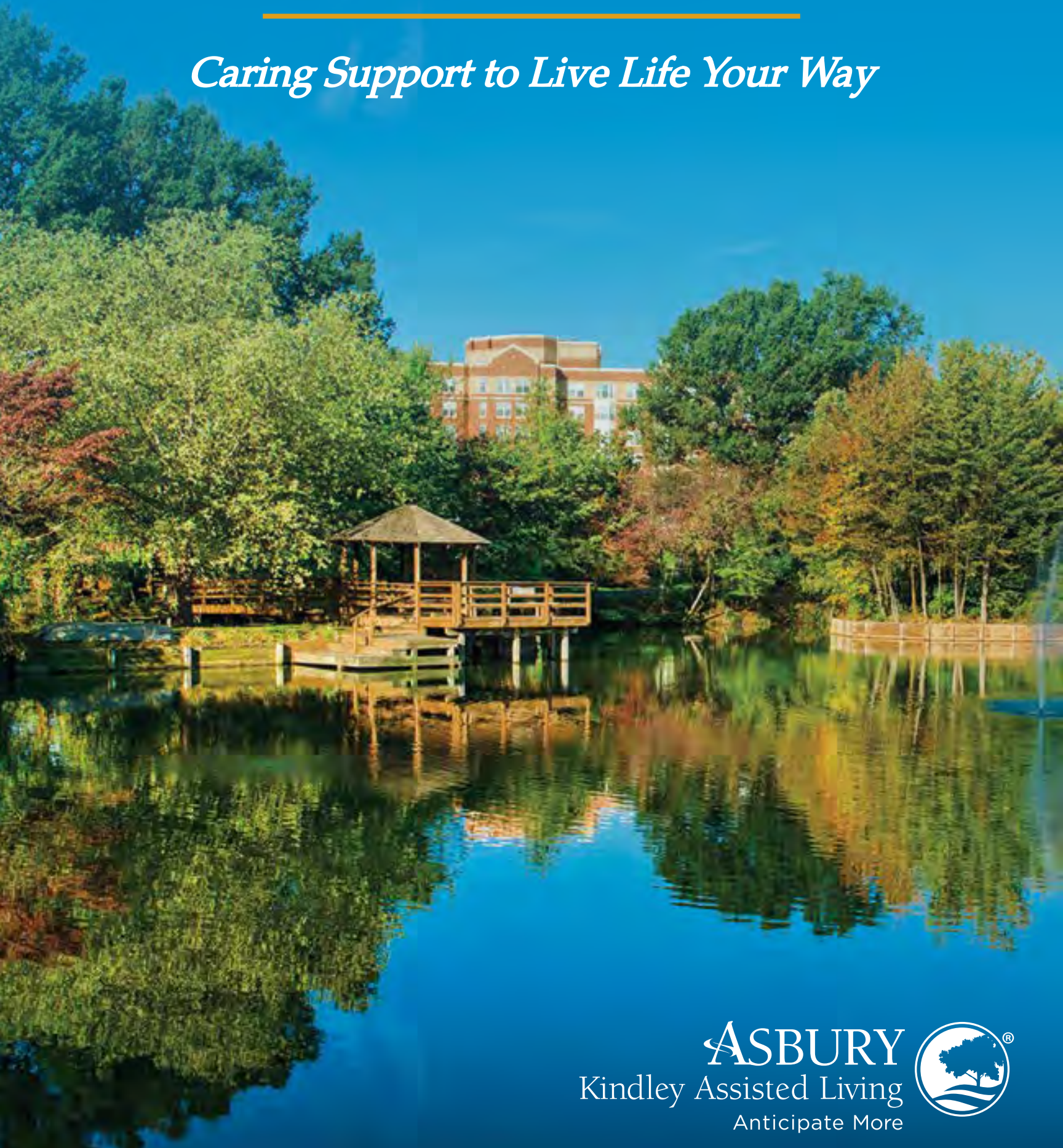


Kindley Assisted Living at Asbury Methodist Village

Caring Support to Live Life Your Way



ASBURY
Kindley Assisted Living
Anticipate More





Rediscover Your Independence

Let our caring, dedicated team of associates help take care of your daily living tasks and chores. It is our mission to provide just the right amount of care and support.

Live life your way in your own private apartment surrounded by your favorite mementos and furniture. Knowing you have access to expert, compassionate and dignified care right outside your door provides the confidence to breeze through your day.

Rediscover your independence when you join a community where you can anticipate more – more laughter, more smiles, more security, more opportunities!

When you live at Kindly Assisted Living at Asbury Methodist Village, so many things become possible. Enjoy the peace of mind that comes from having a caring team of people to assist you with living the life you want. Spend your time with family and friends enjoying each other's company – not running errands or doing household chores.

When you join our neighborhood, you are gaining the expertise, resources, and Mission-focused commitment that come from joining Montgomery County's premier continuing care retirement community – one with more than 95 years of service to seniors.

You do not have to be a resident of Asbury Methodist Village to live at Kindly Assisted Living, and no entrance fee is required.

Included in the Monthly Service Fee

Unlike some assisted living offerings, Kindly Assisted Living includes all services and amenities in one convenient, monthly service fee. Incoming residents receive a comprehensive assessment of the supportive and personal care services they will require, which is factored into the monthly fee. That means no surprises.

- » Access to a full continuum of on-site services and care
- » Personalized service plan created with resident and family to address care needs and goals
- » Nursing professionals on site 24 hours a day
- » Medication management
- » Daily choice of menu items and venues, 3 meals per day plus snacks
- » Full-time resident programs director with a full calendar of events, including cultural, social and wellness-focused options
- » Weekly trips
- » All utilities including telephone and cable
- » All interior and exterior maintenance
- » Weekly housekeeping, towels included
- » Scheduled transportation
- » 24-hour security with emergency call system
- » Full time chaplain
- » Full time social director
- » Access to physical, occupational and speech therapies
- » Priority access to Reflections Memory Support program
- » Priority access to Wilson Health Care Center on site for inpatient rehabilitation therapy



We proudly offer the Kinnections Brain Health Program, which assesses and addresses all cognitive domains through a comprehensive range of strategies.



Private, Secure Apartment Living

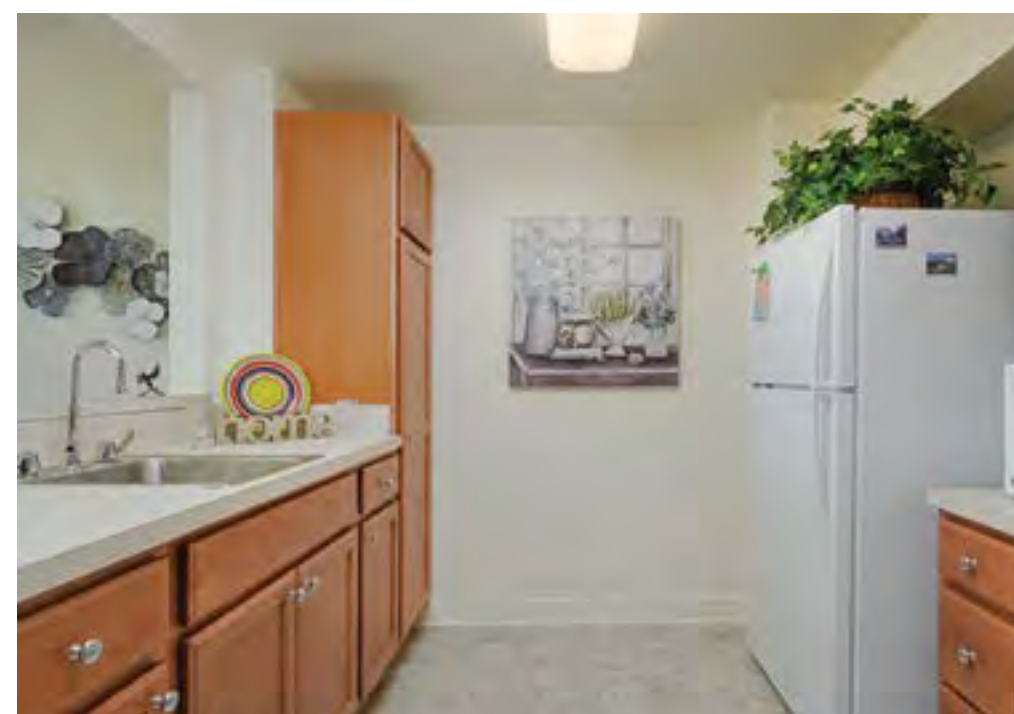
Comfortable apartments with kitchenettes provide plenty of privacy and the ability to live life just the way you prefer. With your favorite furnishings, mementos and decorations, you'll feel right at home – and secure knowing assistance is there if you need it.

Designed to accommodate aging and changes in your health, our apartments provide walk-in showers, hand-rails, and other safety features.



Many of Kindley's apartments overlook Asbury's parklike 17-acre Wildlife Preserve, which is situated on a 134-acre campus that is a certified arboretum. In spring, summer, and fall, Asbury Methodist Village is ablaze with beautiful blooms and foliage. Residents can enjoy the Preserve's paved trails.

Kindley Assisted Living also has an outdoor patio where picnics, barbecues, and events are held – and where guests are welcome to visit with Kindley residents.



About Asbury Methodist Village

Founded in 1926, Asbury Methodist Village is one of the nation's largest CCRCs, with hundreds of resident programs and events, beautiful dining venues, and a wide range of wellness programs supporting Parkinson's disease, brain health, and much more.

Asbury Methodist Village is part of Asbury Communities, a national leader in not-for-profit continuing care retirement communities. We are proud to hold EAGLE accreditation from the United Methodist Association of Health and Welfare Ministries and SAGECare Platinum accreditation.



The Reviews Are In!



"My dad moved to Kindley Assisted Living and loved it! His apartment was spacious, sunny and overlooked parkland. He enjoyed the companionship of his caregivers, and felt that they became his friends. He was always involved in activities; his favorites were balloon volleyball and bingo! My dad enjoyed the dining experience as well as the food. It was of great comfort to me to always see him smiling and involved in the life at Kindley."

- Diane Neal



"I had been doing everything for Mom. It was hard to just hand over a lot of the responsibilities that I had. And it took me a few weeks, but as I began to see Mom comfortably slipping into the routine and to the staff, to everything, I began to realize [Reflections Memory Care] was perfect for her. They were providing things that I had had trouble providing."

- Karen Plunkett

Spectacular Natural Setting

Kindley Assisted Living overlooks Asbury's 17-acre Wildlife Preserve, with ponds, green spaces and cherry trees, walking trails, and bluebirds, herons, and deer. There's a reason that a visiting National Geographic photographer called Asbury "a rural oasis in an urban setting."



Secure, Person-Centered Memory Care

Kindley Assisted Living's designated memory care neighborhood is unique in its emphasis on comprehensive wellness for residents in the early stages of Alzheimer's disease and dementia.

Specially trained associates provide personalized services and daily opportunities for purposeful living. From artistic expression to social engagement, each resident's experience is as unique as their personality, background and life experiences, and memories.

Residents have access to a wide range of opportunities across the Asbury Methodist Village campus as well as 7-day-a-week on-site services and programming. Residents enjoy such offerings as aromatherapy, massage, art and music therapy, guided imagery, wellness classes, and a variety of planned social opportunities.

Enriching Well-Being

At Kindley Assisted Living, we understand that wellness includes much more than physical fitness.

Spending time with others is a key factor in our well-being. Prolonged isolation can lead to higher rates of anxiety, depression, loneliness, and over time, increased risk for dementia. While we honor each resident's preferences and respect their independence, we work hard to help residents feel connected to their new home and forge relationships with their neighbors and Kindley associates.

Further, our comprehensive wellness programming is designed to enrich the whole person, and includes social, emotional, intellectual, vocational, and spiritual dimensions. Kindley Assisted Living enhances its in-person offerings with online programming, including wellness classes created and televised by Asbury's AVTV Studio.

Discover the opportunities assisted living can bring. Turn the page on a new chapter in your life. It's a story filled with meaningful connections, peace of mind, and the support to keep you moving forward.



Dine Deliciously

We know food matters! Kindley Assisted Living provides three fresh, delicious meals daily for residents in our family-style dining room. Our dining program features choices with every meal, including brain-healthy, plant-based meals and heart-healthy options. All are designed to delight your taste buds.

Residents of Kindley Assisted Living and their family members also enjoy access to Asbury Methodist Village's five dining venues, including the beautiful Blue Note Bistro. Kindley

enjoys close proximity to Russell Avenue Café, a popular breakfast and lunch spot featuring delicatessen and daily specials.

Asbury Methodist Village is proud to host Chef's Table, a special event where residents join our chefs in the kitchen for a showstopper gourmet meal. Residents may submit their names for the monthly drawing. This behind-the-scenes dining and learning experience is always a delicious delight.

Safety, Commitment, Quality

As a Mission-focused organization with a faith heritage, we are proud to hold EAGLE accreditation from the United Methodist Association of Health & Welfare Ministries.

Through on-site peer reviews and a re-accreditation process for existing members, EAGLE ensures that partner organizations are: operating in a manner that is representative of their faith values; being responsible stewards of physical and financial assets; ensuring long-term sustainability; and, honoring their not-for-profit status by reinforcing community benefit and spiritual values.

Asbury is a community of welcome for people of all beliefs, cultures, and backgrounds, and the first continuing care retirement community in Maryland to earn Platinum certification from SAGECare, an LGBTQ accrediting body for senior living organizations.

Our associates take pride in the details and truly care for the people they serve. Their work is more than a job, it's work with a purpose. When asked what they enjoy most about their day, associates invariably reply, "the residents," and this is in evidence everywhere you go at Kindley Assisted Living.

"I have yet to see a staff member not recall a resident's name or some little facts about them," says Karen Plunkett, who shared her mother's experiences in a video interview. "Staff seems to know the individual interests of all the residents." Ashlee Fisher echoes many Asbury associates when she says, "We consider residents like our own family."



Our Commitment to You

The safety and well-being of residents is our highest priority. Asbury is proud of its outstanding record of safety during the COVID-19 pandemic, including our decision in early 2021 to be an industry leader in requiring that all associates receive the COVID-19 vaccine.



A Beautiful Place to Recover

By joining the Kindley Assisted Living family, you gain access to Asbury Methodist Village's complete continuum of on-site health care services – including Wilson Health Care Center.



Wilson offers post-acute rehabilitative services, telemedicine, and a range of specialized programs for such conditions as stroke, wound care, Parkinson's disease, and late-stage dementia care. Geriatric primary care and outpatient therapy services are located close to Wilson Health Care Center. Shuttles and scheduled transportation make on-campus travel to appointments a breeze.

Wilson's newly renovated rehabilitative care wing, family areas, and dining areas make it a beautiful place to recover.

Wilson Health Care Center is ranked a U.S. News & World Report 2022-2023 Best Nursing Home for Short-Term Rehabilitative Care.




**Contact Our
Admissions Team**

Call: 301-987-6071

Fax: 301-987-6319

KindleyAtAsbury.org



ASBURY 
Kindly Assisted Living
Anticipate More

333 Russell Ave, Gaithersburg, MD 20877

