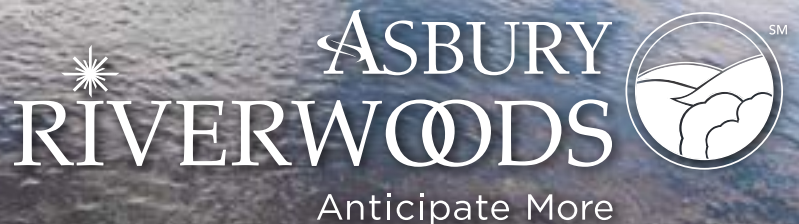


# Senior Health Care, Rehabilitative Services and Memory Care

---

Trusted Care from Asbury RiverWoods



# Adams Center for Rehabilitation and Transitional Care

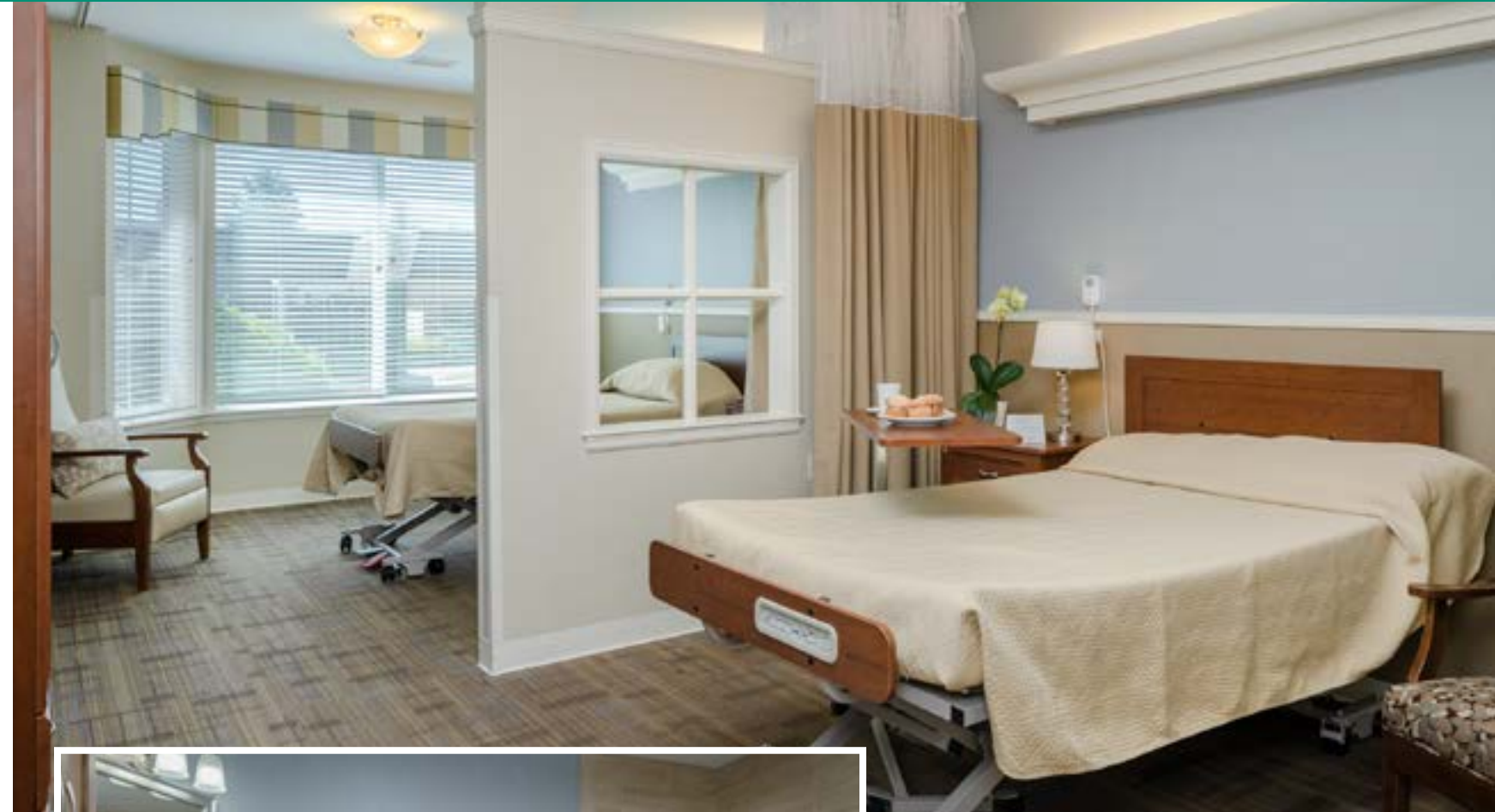


Whether you are recovering from surgery, illness, or an injury, our senior rehabilitation will keep your recovery moving forward. Our interdisciplinary team approach combined with the most proven therapy protocols will get you home as quickly and safely as possible. Helping seniors resume their lives as independently and actively as possible is our goal.

We serve seniors recovering from surgery, illness, or injury. Our caring staff provides professional services for people recovering from a stroke or managing neurological conditions such as Parkinson's disease, requiring specialized wound care, or healing after an amputation, fracture, or joint replacement surgery. We also serve those who have a chronic condition such as COPD, benign paroxysmal vertigo, arthritis, or simply need to regain strength after a hospitalization.

## Post-acute senior rehabilitation services include:

- » Physical therapy: Work to rebuild your strength and balance
- » Occupational therapy: Regain independence by improving your ability to manage everyday tasks
- » Respiratory therapy: Designed to help manage chronic and acute breathing issues
- » Specialized stroke program: Experienced, multi-disciplinary team with holistic focus
- » Speech/language therapy: Improve speech and swallowing abilities
- » On-site aquatic therapy
- » Experienced, licensed therapists utilize therapeutic modalities, electrical stimulation, ultrasound, diathermy, aquatic therapy, and Wii.



## Multi-disciplinary Team for Person-Centered Care

Your treatment team includes your physician, therapists, case manager, nurses, dietitians, and social workers – working in concert with a discharge planner, you, and your family. We create a comprehensive treatment plan with goals and progress assessments.

Accommodations at the Adams Center include bright, well-appointed suites, a large communal living room for visits with guests and family and a restaurant-style dining room.



## Quality Person-Centered Skilled Nursing, Memory Care and Rehabilitation Services

The Nursing Care Center at RiverWoods offers 24-hour quality skilled nursing, as well as long-term care and memory support for people with advanced-stage dementia. The Memory Care Residence offers a comforting, structured, monitored environment that honors residents' independence in accordance with their abilities.

Our beautiful 108-acre campus is also home to the Adams Center for Rehabilitation and Transitional Care offering short-term rehabilitation following surgery or illness. Services include physical, speech, occupational and respiratory therapy — with specialized rehabilitative services for seniors with Parkinson's disease.

As part of the RiverWoods continuing care retirement community, residents and their family members have access to the community's programs, amenities, and events, including a pool and fitness center, and dining options. RiverWoods has its own varied calendar of events, designed by a full-time program specialist who makes residents' interests a cornerstone.

### Health Care Services

- » 24-hour skilled nursing care
- » Short-term rehabilitation
- » Dietary support
- » Secure memory care
- » Stroke recovery
- » Respite care
- » Wound care
- » On-site aquatic therapy
- » Monoclonal antibody therapy

Accommodations include private and semi-private rooms, three meals a day, plus snacks, a communal great room and café for visiting with family and guests, and a covered outdoor seating area.



**Our medical professionals work with Lewisburg seniors and their loved ones to deliver person-centered care that honors each resident's preferences.**

### Our Commitment to You

The safety and well-being of residents is our highest priority.

Each resident, along with their family members, works with a comprehensive Care Navigation Team to create a holistic, personalized approach to long-term success. This team is made up of associates from nursing, therapy, social work, pastoral care, and wellness, to ensure smooth transitions between settings and coordinated services.

Please click here to see how we are creating a safe environment for those who live and work here. <https://www.asbury.org/Asbury-Prevention-Measures/>



## Trusted Care from Experienced Professionals

### A Legacy of Serving Seniors

For more than 100 years, Asbury RiverWoods has dedicated itself to providing an enriching retirement lifestyle with the security of quality on-site health care services. As a not-for-profit with a faith-based heritage, the RiverWoods Nursing Care Center serves all area seniors living in Lewisburg – not just residents of our continuing care retirement community.

### Person-Centered for Unique, Personalized Care

What does person-centered care mean?

We take resident and family requests seriously and we work hard to accommodate them. The Nursing Care Center provides comprehensive skilled nursing care by compassionate, experienced staff. And then we go a step further. We seek input from and address the holistic needs of each person in a way that best suits their unique needs and preferences.

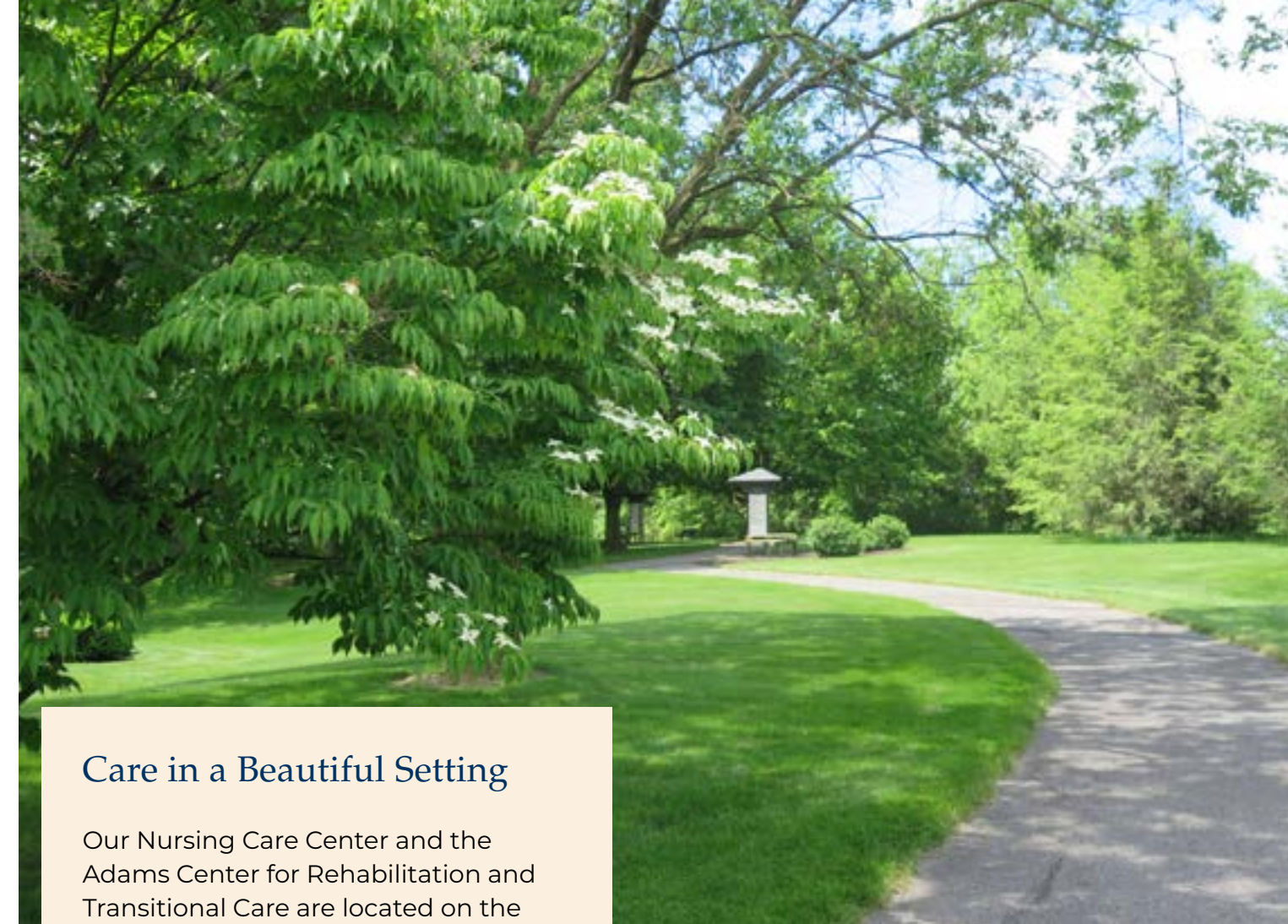
### Enriching Well-Being

At Asbury RiverWoods, we know that wellness includes much more than physical fitness.

We understand the role emotions play in the path to recovery. Spending time with others is a key factor in our well-being. Residents enjoy multiple opportunities daily to participate in events and connect with one another, supervised by a therapeutic recreation specialist.

And while we honor each resident's preferences and respect their independence, we work hard to help them feel connected to their new home and forge relationships with their neighbors and Asbury RiverWoods' associates.

Further, our comprehensive wellness programming is designed to enrich the whole person, and includes social, emotional, intellectual, vocational, and spiritual dimensions.



### Care in a Beautiful Setting

Our Nursing Care Center and the Adams Center for Rehabilitation and Transitional Care are located on the picturesque 108-acre campus of Asbury RiverWoods, brimming with gorgeous foliage and majestic trees.

A continuing care retirement community, Asbury RiverWoods includes a cafe and as well as a walking path outfitted with LifeTrail stations for stretching and strength training. These amenities are open to residents of the Nursing Care Center, the Adams Center, and Riverview Manor.



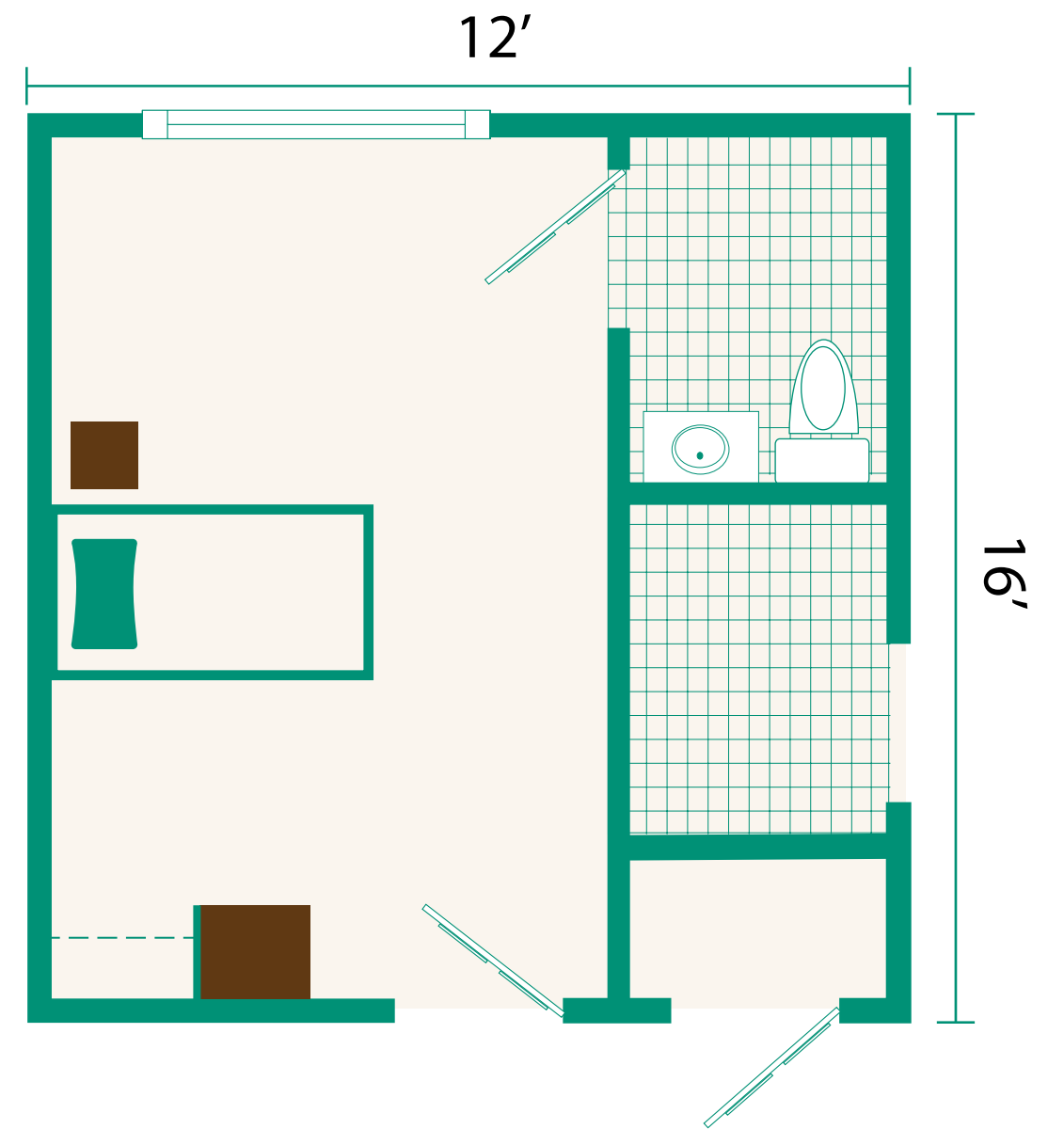
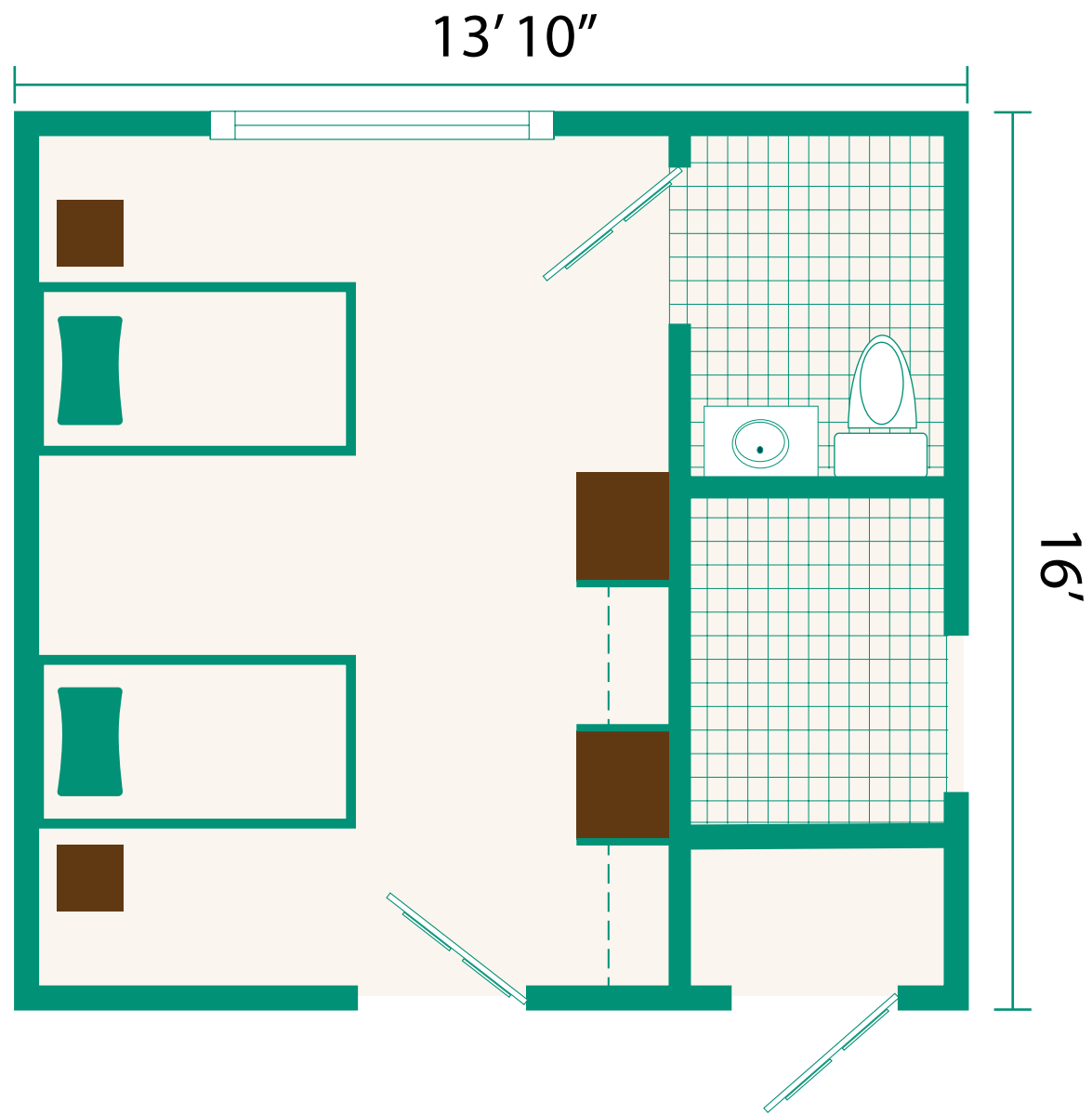
### Our Mission, Our Pledge

As a not-for-profit community with a faith-based heritage, it is our Mission to do all the good we can for those we serve. Benevolent Care provided through the Asbury Foundation offers anonymous financial support for residents who outlive their resources through no fault of their own.

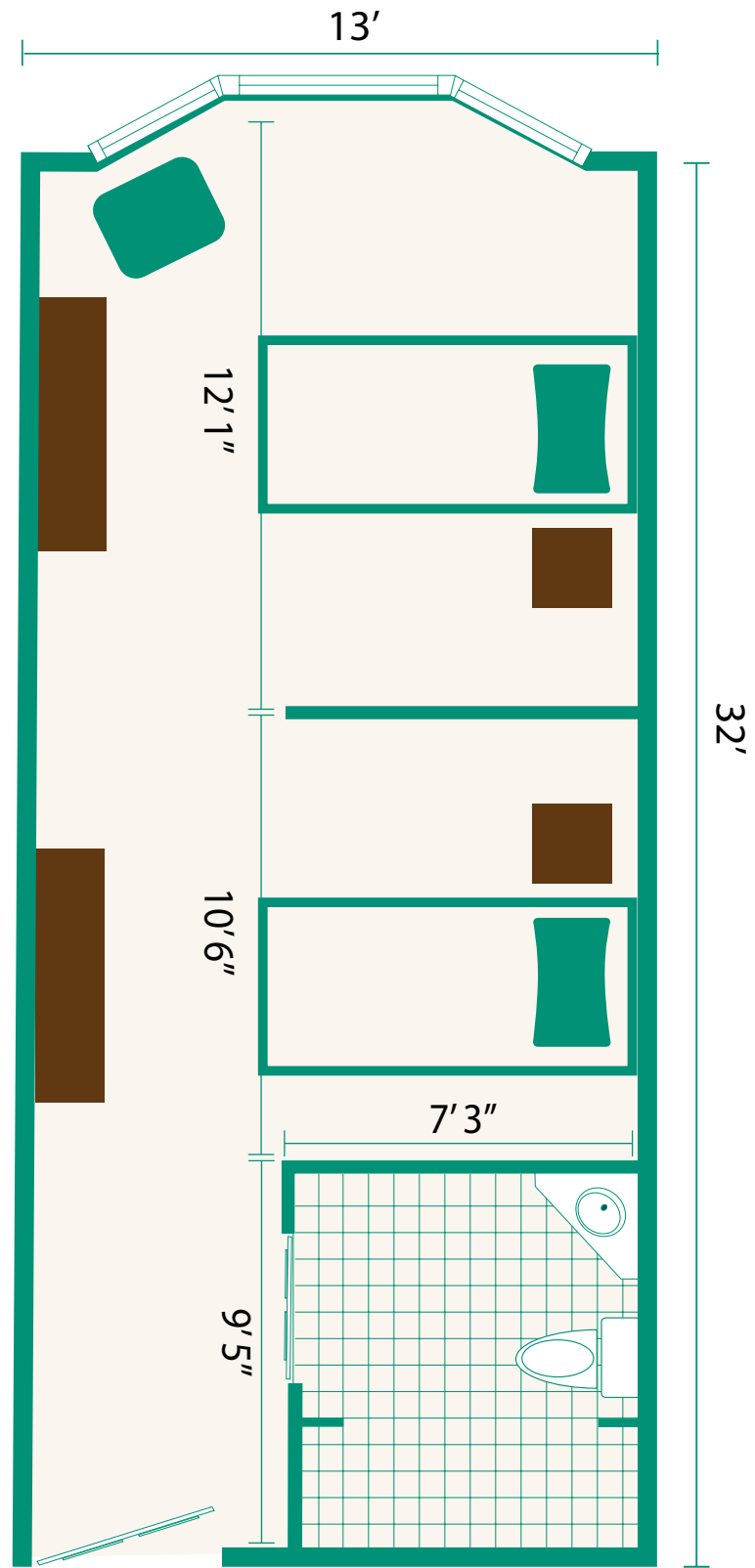
Asbury RiverWoods is part of Asbury Communities, a national leader in not-for-profit continuing care retirement communities and related aging services, which operates in Maryland, Pennsylvania, and Tennessee.

# Skilled Nursing Care Semi-Private Room

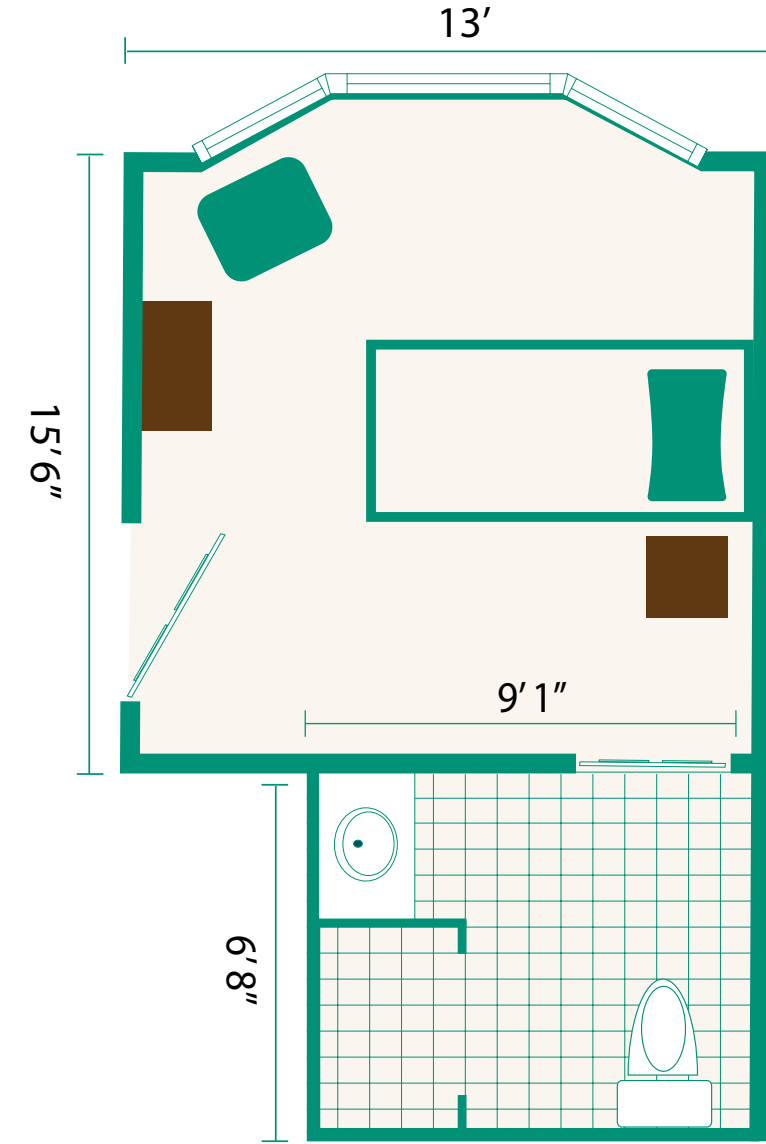
# Skilled Nursing Care Private Room

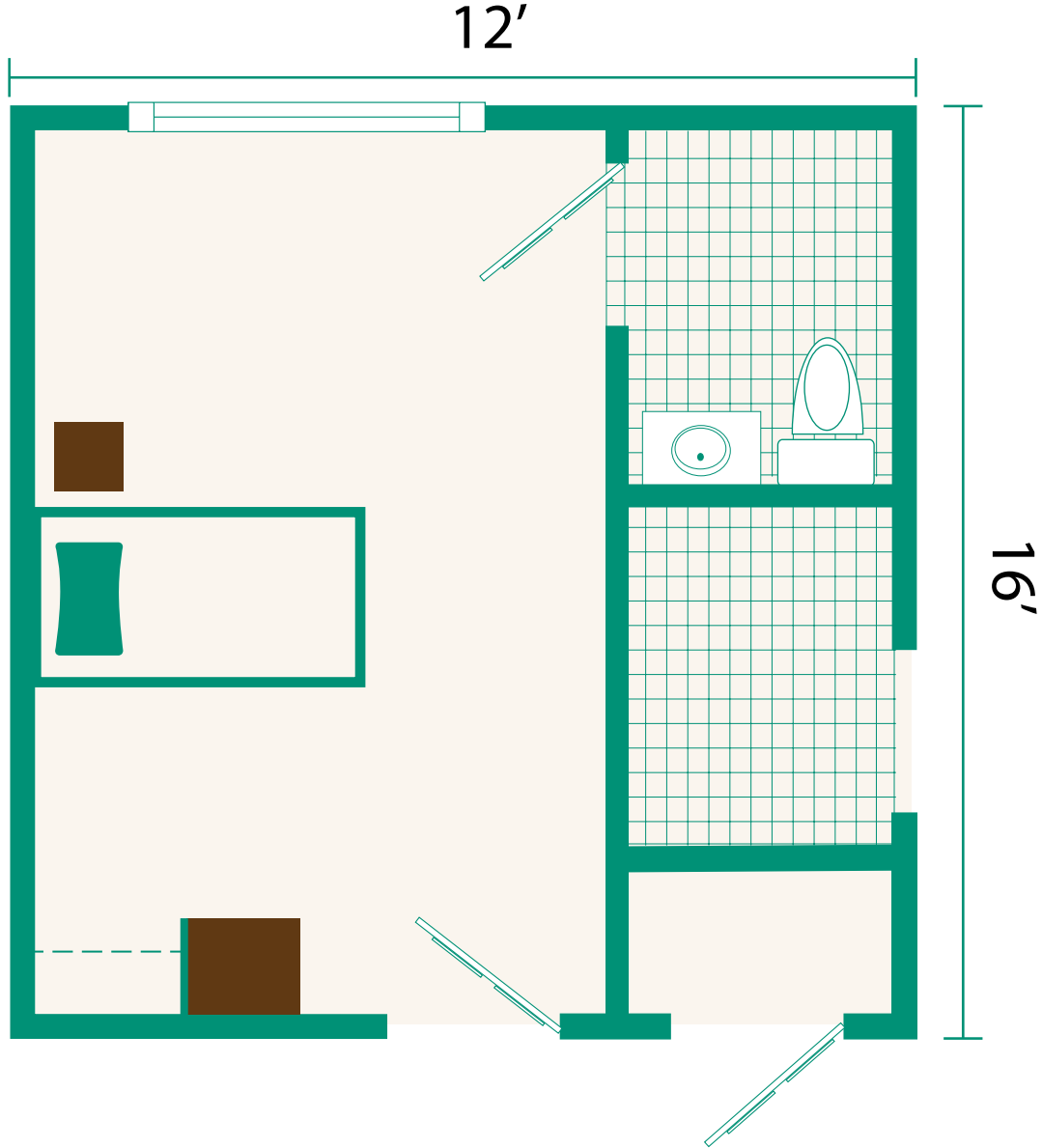


# Short-Term Rehabilitation Semi-Private Room



# Short-Term Rehabilitation Private Room





**SHORT-TERM REHABILITATION**

Room Type	Daily Fee
SEMI-PRIVATE ROOM	\$567/day
PRIVATE ROOM	\$596/day

**SKILLED NURSING CARE**

Room Type	Daily Fee
SEMI-PRIVATE ROOM	\$403/day
PRIVATE ROOM	\$451/day

**MEMORY CARE**

Room Type	Daily Fee
SEMI-PRIVATE ROOM	\$459/day
PRIVATE ROOM	\$514/day

Accepted Insurers

- » Aetna
- » AARP
- » Amerigroup
- » BlueCare Plus
- » Blue Cross Blue Shield
- » Blue Journey
- » Medicaid
- » Medicare/Medicare Advantage
- » Tricare
- » United Healthcare





## Contact Our Admissions Team

**Call: (570) 522-6220**

**Fax: (570) 524-5137**

**RiverWoods.org**



Anticipate More

15 RidgeCrest Circle | Lewisburg, PA 17837

